



## Mini Cylinder



# Mini cylinder

page 14

## Technical information

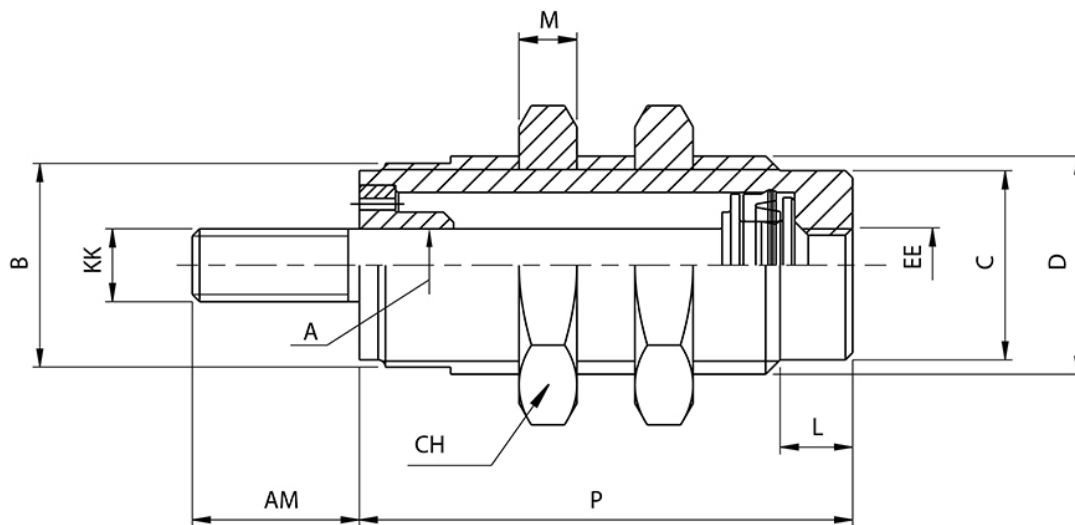
Diameter	Ø6 - Ø10 - Ø16 mm
Stroke	5 - 10 - 15 mm
Medium	Air
Pressure range	2 ... 7 bar
Temperature range	-20°C ... +80°C
	Below 0°C air has to be dried.

## Materials

Tube	Nickel plated brass
Cap	Nickel plated brass
Piston	Brass
Piston rod	Stainless steel
Guide bushing	Sintered bronze
Seals	PUR

C	A	F	6	/	10
			<b>DIAMETER</b>		<b>STROKE</b>
			6		5
			10		10
			16		15

CAF



Type	Ø [mm]	A	B	C	D	L	M	P	AM	KK	EE	CH
CAF 6/5	Ø 6	3	9	8,5	M10x1	5	3	18,5	9	M3	M5	14
CAF 6/10	Ø 6	3	9	8,5	M10x1	5	3	25,5	9	M3	M5	14
CAF 6/15	Ø 6	3	9	8,5	M10x1	5	3	32,5	9	M3	M5	14
CAF 10/5	Ø 10 mm	5	14	13	M15x1,5	5	4	20,5	11,5	M4	M5	19
CAF 10/10	Ø 10 mm	5	14	13	M15x1,5	5	4	27	11,5	M4	M5	19
CAF 10/15	Ø 10 mm	5	14	13	M15x1,5	5	4	34	11,5	M4	M5	19
CAF 16/5	Ø 16 mm	5	20	19	M22x1,5	6	5	23,5	14	M5	M5	27
CAF 16/10	Ø 16 mm	5	20	19	M22x1,5	6	5	29,5	14	M5	M5	27
CAF 16/15	Ø 16 mm	5	20	19	M22x1,5	6	5	36	14	M5	M5	27

